

# PVC & wooden venetian blinds

## Outside fit

bargain  
blinds

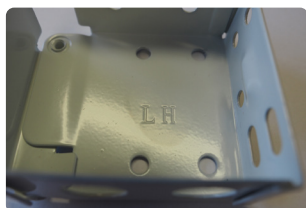
### Getting started

Being careful not to damage the blind or cords when cutting through the packaging, unpack the blind and check all parts are included:

- 1 x pair of end brackets
- Centre brackets depending on the width of the blind
- 2 x screws per bracket
- 1 x pelmet with Velcro tabs

Tools required:

- Pencil
- Tape measure
- Electric screwdriver



### Step 1

1 x LH bracket  
2 x screws

From the point you originally measured from, fix the left bracket (labelled LH) to the architrave or wall using two of the screws provided.

**Tip:** If fixing to the architrave, pre-drill the holes to prevent splitting.

If fixing to the wall you may need to pack out the bracket enough to allow the blind to clear the window reveal when installed.

### Step 2

1 x RH bracket  
2 x screws

On the right side of the window, fix the right bracket (labelled RH) to the architrave or wall at the place originally measured from.

**Tip:** If the left bracket was packed out the same will need to be done on this side.



### Step 3

Centre brackets (if supplied)  
Screws (if supplied)

If the blind includes centre brackets, space them evenly between the end brackets being careful to ensure that they **do not** line up with the ladders in the blind when installed.



### Step 4

Remove the control cord bundle from the top of the headrail, leaving the fabric ties that are holding the blind together.



### Step 5

Open the end bracket latches and place the headrail into the brackets. Close the latches firmly, ensuring they are locked in place.



### Step 6

1 x pelmet  
Velcro tabs

Peel the tape off the back of the velcro tabs and stick a tab to the headrail beside each bracket. Space any remaining tabs evenly between the two outside tabs. Remove the tape from the front of the tabs.

Position the pelmet level with the top of the window and attach by pressing firmly against the Velcro tabs.



### Step 7

While holding the blind in place, carefully untie the fabric straps.

**Blind operation:** To lower, hold the group of cords across the face of the blind and pull gently to release the cord lock before lowering the blind. Tilt the blind using the two wooden tassels.