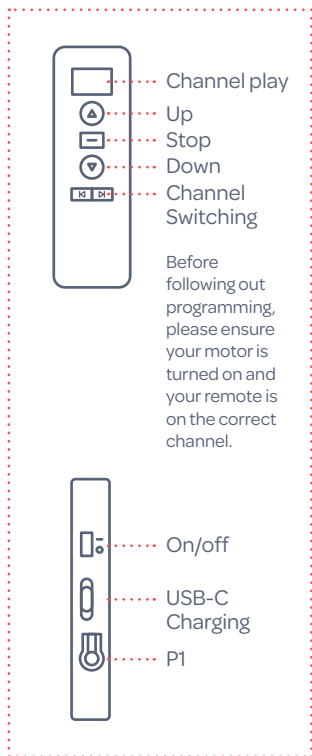
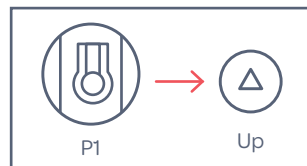


Radio Programming Instructions



Please note these instructions are set around the basics required to get your roller blinds operational, for more in-depth programming please refer to your motorisation manual or feel free to contact the technical support team.



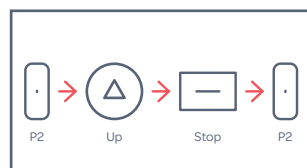
Step 1

Pair the motor to remote: Press and hold the P1 button on the motor head for 1 second, this will put the motor into pairing mode. If successful the blind will jog once, if the blind does not jog repeat step 1 from the beginning. Within 10 seconds of the motor jogging, press the Up button on the remote. If the remote is paired successfully the blind will jog once, if unsuccessful repeat step 1 again from the beginning.



Step 2

Check the direction of the motor: Attempt running the blind up and down, if the blind is running in the correct direction proceed to step 3. If the blind is running in the opposite direction to the command from the remote, the motor will need to be reversed. To reverse the direction of the motor press and hold the Stop button for 5s, if successful the motor will jog once. After this press the Down button, if successful the motor will jog once more and the motor will now run in the correct direction.

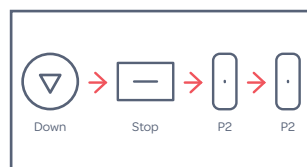


Step 3

Set the upper limit: Turn over your remote and see the P2 button, using a paperclip or a small pencil press and hold this button for 1s to enter limit setting mode, the blind will jog once. Using the Up button, move the blind to the desired upper limit and press Stop, avoiding pressing the down button. Press and hold the P2 button again to confirm the limit, the motor will jog once more.



To delete the upper limit: Press the Up button, ensuring the blind is sitting at the set upper limit, proceed to press and hold the P2 button on your remote for 7s. While holding down the P2 button, the blind will jog once initially then jog again after the 7s.



Step 4

Set the lower limit: Using the Down button, lower the blind to the desired height and press Stop, avoiding pressing the Up button. Press and hold the P2 button for 1s to confirm the limit, the blind will jog once. Press and hold the P2 button once more for 1s to exit limit setting mode, the blind will jog once more.



To delete the lower limit: Press the Down button ensuring the blind is sitting at the set lower limit, proceed to press and hold the PROG button on your remote for 7s. While holding down the PROG button, the blind will jog once initially then jog twice again after the end of 7s.

Extras

Limit fine tuning: Using the Up or the Down button, move the blind to the limit you wish to fine tune. Press the P2 button for 1s to enter fine tuning mode, the motor will jog once. Adjust the limit to the new desired height, press stop and press the P2 button for 1s to confirm the new limit and exit fine tuning mode, the motor will jog once more.

Factory reset: Press and hold the stop button on the remote for 5s, the motor will jog once. Within 10s press and hold the P2 button for 7s, the blind will jog once after 1s and then jog twice after 7s. The motors programmed remotes, limits and settings will be deleted.